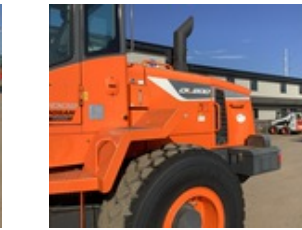
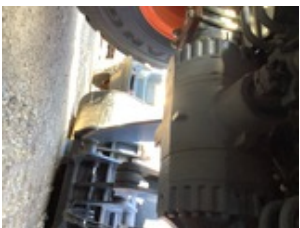
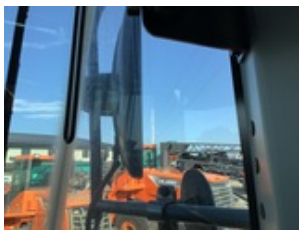
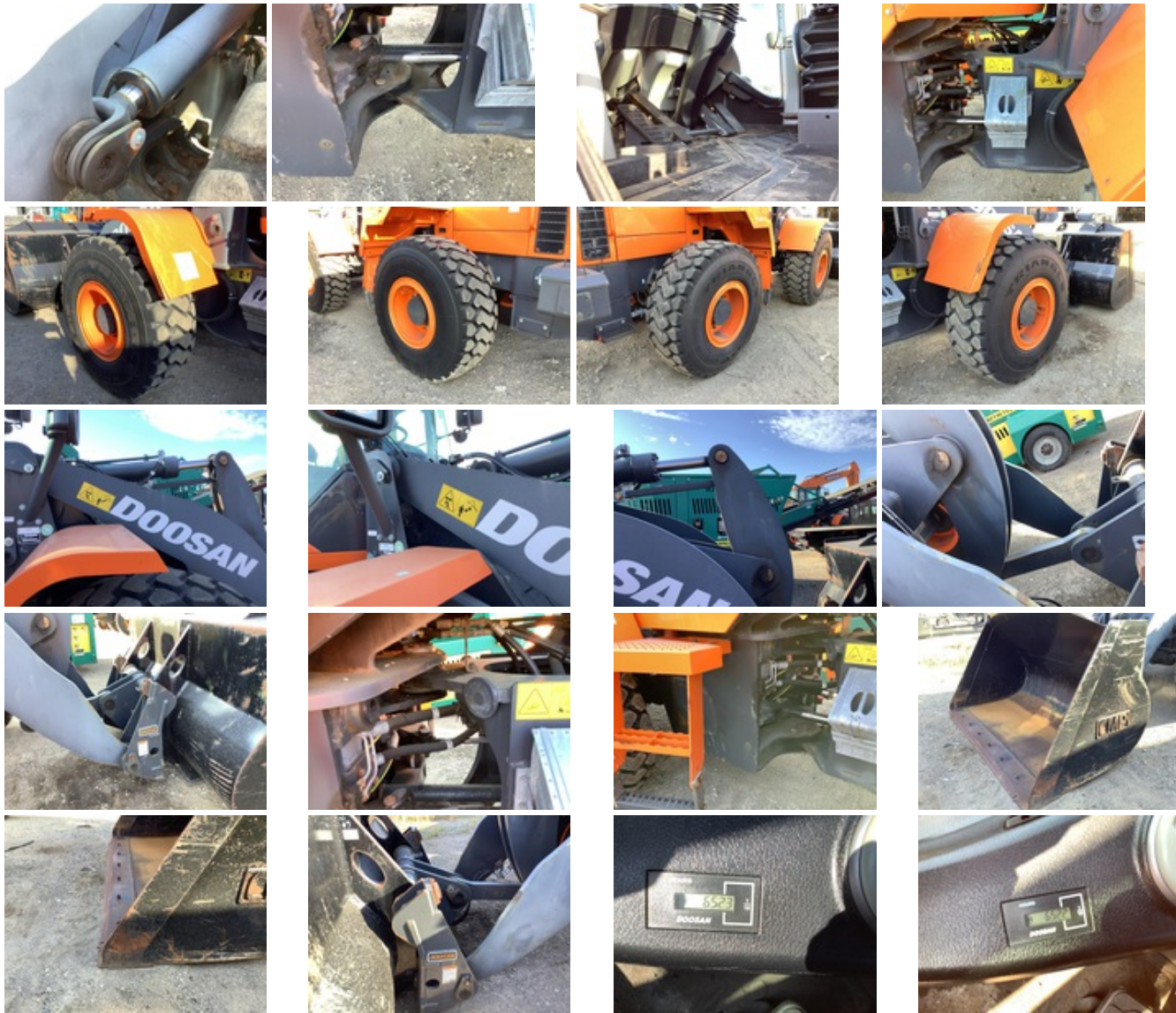


# 2019 DOOSAN DL200-5

UNIT: DHKCWLBRCK5050036







## UNIT SPECS

Customer PNC Equipment Finance

## LOCATION

RTL EQUIPMENT 📍  
14833 164th Ave SE  
Big Lake, MN 55309

## GENERAL APPEARANCE

Year  
2019

Make  
DOOSAN

Model

DL200-5

Unit Number  
168012

Pre-Operational Checks

Confirm Fluids Checked: Engine Coolant. Confirm Fluids Checked: Engine(s) Oil. Confirm Fluids Checked: Transmission Fluid. Confirm Fluids Checked: Hydraulic Fluid. Confirm Fluids Checked: Fuel Level

Paint  
Damage

Body Panels  
No visible damage or missing components.

Fenders  
No visible damage or missing components.

Steps  
No visible damage or missing components.

Hand Rails  
No visible damage or missing components

Exterior Lights  
All lights operational

Cab/Canopy Overhead Structural Framework  
No visible damage

Serial Number / VIN  
DHKCWLBRCK5050036

Serial Number  
DHKCWLBRCK5050036

## SAFETY

Travel Alarm  
Operational

Horn  
Operational

Seat Belts  
Operational

Current Safety Manual  
No

Current Operator/Maintenance Manual  
No

## CONTROL STATION

Seat/Armrests  
No visible damage or missing components

Glass

No visible damage or missing components

Cab Doors

No visible damage or missing components

Steering Controls

Rating:

Good

Hydraulic Controls

Rating:

Good

Drivetrain Controls

Rating:

Good

Dash Console

Rating:

Good

Engine Oil Pressure

No oil pressure indicator

Warning Lights

Operational

Gauges

Operational

Rear View Camera

Camera operates as intended

Air Conditioner

Operational

Heater

Operational

Limited Function Check (Control Station)

The main components are in place and operational as noted.



Control Station

Cab Type, Enclosed Cab, Air Conditioner, Rear View Camera, Ride Control, Autoshift

Hour Meter / Odometer

652 hrs

Hour Meter /Odometer Usage Reading (Start)

652.2 hrs

## ENGINE

A/C Compressor

Operational

Blow-by (Subjective Visual Observation)

No noticeable vapor or pressure



Starter

## Operational

### Exhaust System

No visible damage or missing components

### Radiator

Rating:

Good

### Oil Leaks

No dripping leaks

### Limited Function Check (Engine)

The engine started and ran.



Engine

Requires Diesel Exhaust Fluid

### Engine Coolant Heater

Engine Coolant Heater

## DRIVETRAIN

### Transmission

Operational

Rating:

Good

### Front Drive Axle

Rating:

Good

### Rear Drive Axle

Rating:

Good

### Final Drives

Rating:

Good

### Limited Function Check (Drivetrain)

The drivetrain was operational.

## HYDRAULICS

### Pumps (Hydraulics)

Rating:

Good

### Valves

Rating:

Good

### Hydraulic Tank

Rating:

Good

### Hoses (Hydraulics)

Rating:

Good

Loader Lift Cylinders

Rating:

Good

Bucket Tilt Cylinders

Rating:

Good

Steering Cylinders

Rating:

Good

Limited Function Check (Hydraulics)

The hydraulic system was operational.

## CHASSIS

Lift Arm Condition

Rating:

Good

Chassis To Arm Pins

Rating:

Good

Tilt Linkage

Rating:

Good

Tilt Linkage Pins And Bushings

Rating:

Good

Quick Coupler To Arms Pins

Rating:

Good

Limited Function Check (Chassis)

The main chassis components were operational in a limited check.

Articulating Center Pins

Rating:

Good

Brake Type

Hydraulic

Master Cylinder

Rating:

Good

Brake Lines/Hoses

Not operationally checked

Park Brake

Stopped from a slow roll

Rating:

Good

#### Limited Function Check - Brakes

The brake system functioned, stopping and holding the machine.

#### Frame Condition

Rating:

Good

#### Left Front Tire

Triangle TB516 20.5R25 36/32" Tread Depth

Rating:

Good

#### Left Rear Tire

Triangle TB516 20.5R25 36/32" Tread Depth

Rating:

Good

#### Right Rear Tire

Triangle TB516 20.5R265 34/32" Tread Depth

Rating:

Good

#### Right Front Tire

Triangle TB516 20.5R25 38/32" Tread Depth

Rating:

Good

#### Wheel Condition

No visible damage or missing components

## SPECIALTY

#### Front Attachment

Front Attachment Details, Quick Coupler Type: Hydraulic Coupler, 100 in

## WHEEL LOADER\*

#### Loader Bucket Condition

Rating:

Good

#### Loader Bucket Cutting Edge

No visible damage or missing components

Rating:

Good

#### Loader Quick Coupler

Doosan Coupler, Not operationally checked

## LOGISTICS INFORMATION

#### General Shipping Information

Yes: Does this Unit Run? Yes: Is self propelled, does the unit travel? Yes: Is the unit taller than 12'? Yes: Inflated Tires - item can roll? No: Is the unit wider than 8'6"? No: Noticeable fluid leaks?

#### Road Related Shipping Info



Yes: Lights Operate? Yes: Brakes Operate? Yes: Tires OK?

## RECONDITIONING

Paint: Damage

\$2,500

**Total**

**\$2,500**