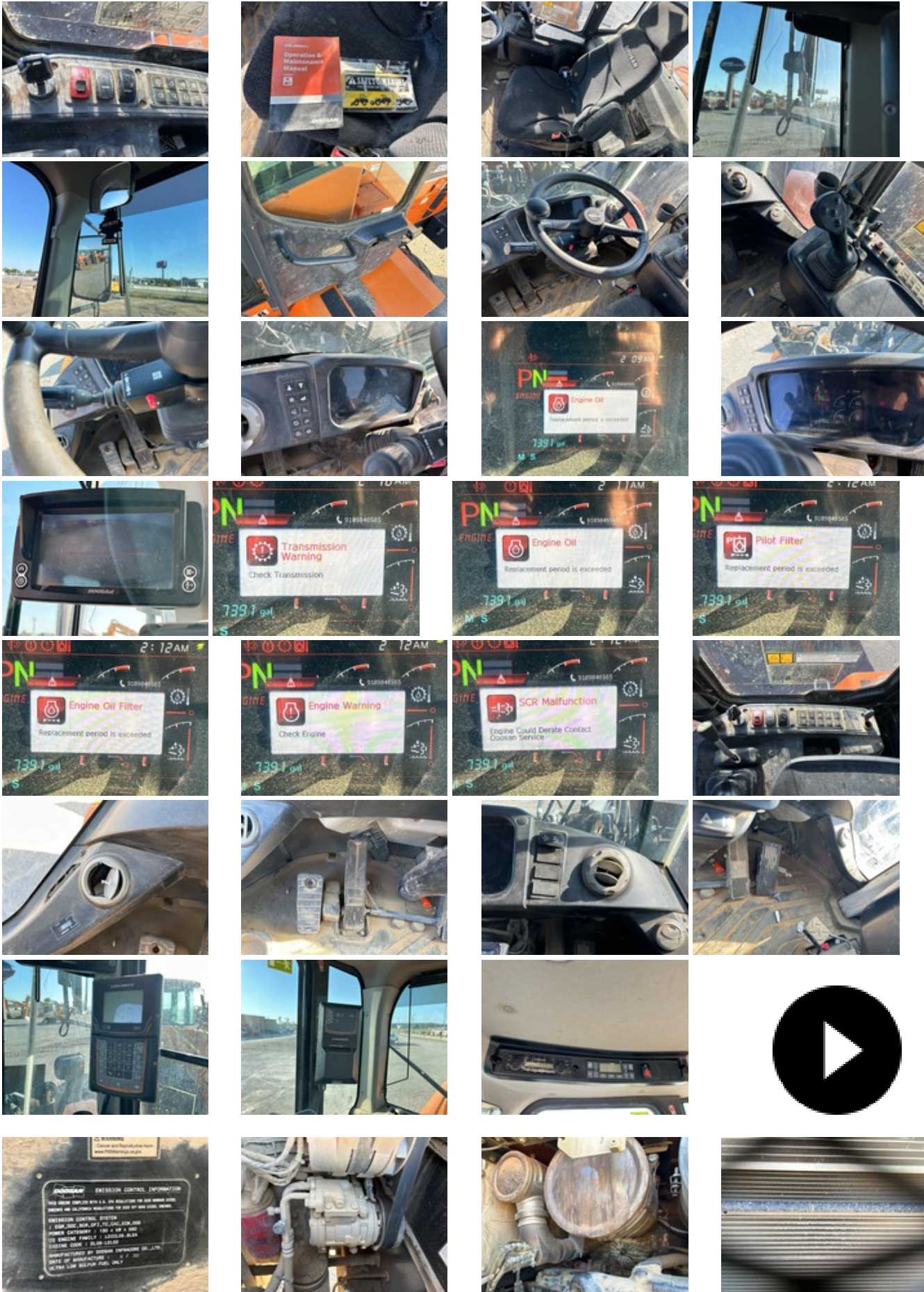
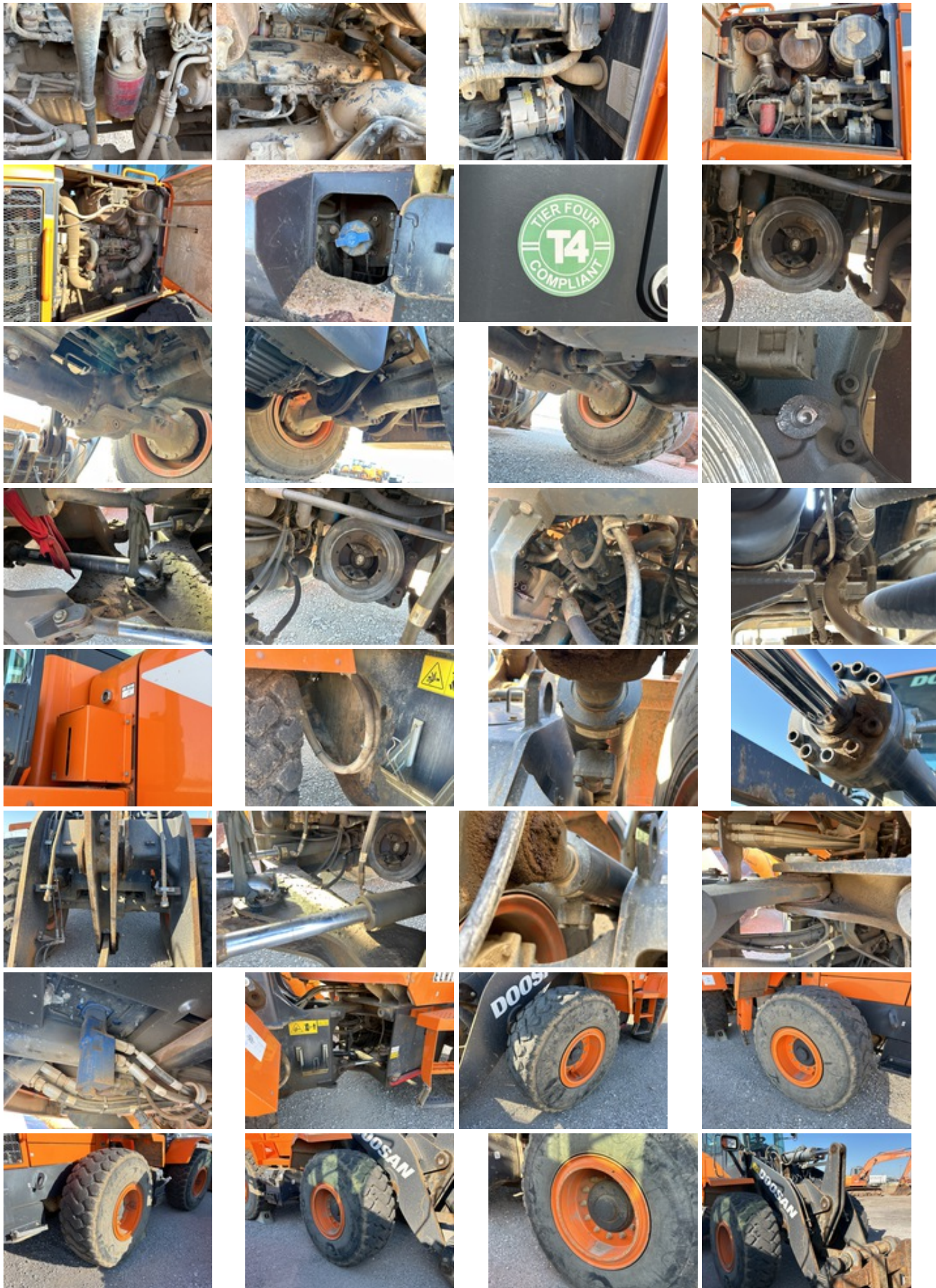


2020 DOOSAN DL220-5

UNIT: DHKCWLCXLL5050243







Confirm Fluids Checked: Engine Coolant. Confirm Fluids Checked: Engine(s) Oil. Confirm Fluids Checked: Transmission Fluid. Confirm Fluids Checked: Hydraulic Fluid. Confirm Fluids Checked: Fuel Level

Paint
Damage

Body Panels
Grille damaged, The grill/radiator door won't open.

Fenders
Right front damaged

Steps
Left cab steps bent, Right cab steps bent, The DEF Tank Housing is damaged. Both rear steps are damaged.

Hand Rails
No visible damage or missing components

Exterior Lights
All lights operational

Cab/Canopy Overhead Structural Framework
No visible damage

Serial Number / VIN
DHKCWLCXLL5050243

Serial Number
DHKCWLCXLL5050243

SAFETY

Horn
Operational

Seat Belts
Operational

Safety Lock Out/Stop
Not tested

Current Safety Manual
Yes

Current Operator/Maintenance Manual
Yes

CONTROL STATION

Seat/Armrests
Operator seat cover torn

Glass
Windshield cracked

Cab Doors
No visible damage or missing components

Steering Controls

Rating:
Good

Hydraulic Controls
Rating:
Good

Drivetrain Controls
Rating:
Good

Dash Console
Rating:
Good

Engine Oil Pressure
No oil pressure indicator

Warning Lights
Operational

Gauges
Operational

Rear View Camera
Camera operates as intended

Air Conditioner
Not checked.

Heater
Not operationally checked

Limited Function Check (Control Station)

The item was not operational. The main components could not be operationally checked. The transmission is damaged, the POC advised not to start the engine. One vent louvre is damaged.



Control Station

Cab Type, Enclosed Cab, Air Conditioner, Rear View Camera, Air Ride Seat, Autoshift, Loadrite On-Board Scale w/Printer

Hour Meter / Odometer
5364 mi

Hour Meter /Odometer Usage Reading (Start)
5364 mi

ENGINE

A/C Compressor
Not checked

Starter
Not operationally checked

Exhaust System
No visible damage or missing components

Radiator
Rating:

Good

Oil Leaks
No dripping leaks

Fuel Leaks
No dripping leaks

Cooling System Leaks
No dripping leaks

Limited Function Check (Engine)
The engine could not be started.

Emission Status
Tier 4

Engine
2020 US EPA Label, Requires Diesel Exhaust Fluid

DRIVETRAIN

Transmission
The brake caliper bosses are broken off.
Rating:
Poor

Front Drive Axle
Rating:
Good

Rear Drive Axle
Rating:
Good

Final Drives
Rating:
Good

Limited Function Check (Drivetrain)
The drivetrain could not be operationally checked.

HYDRAULICS

Pumps (Hydraulics)
Rating:
Good

Valves
Rating:
Good

Hydraulic Tank
Rating:
Good

Hoses (Hydraulics)
Rating:
Good

Loader Lift Cylinders

Rating:

Good

Bucket Tilt Cylinders

Rating:

Good

Auxiliary Hydraulic Plumbing

Capped off, Front

Steering Cylinders

Rating:

Good

Limited Function Check (Hydraulics)

The hydraulic system could not be operationally checked.

CHASSIS

Lift Arm Condition

Rating:

Good

Chassis To Arm Pins

Rating:

Good

Tilt Linkage

Rating:

Good

Tilt Linkage Pins And Bushings

Rating:

Good

Quick Coupler To Arms Pins

Rating:

Good

Limited Function Check (Chassis)

The unit could not be started. Several components could not be checked.

Articulating Center Pins

Rating:

Good

Brake Type

Hydraulic

Master Cylinder

Rating:

Good

Brake Lines/Hoses

Not operationally checked

Rating:

Good

Park Brake

Broken off of transmission.

Rating:

Poor

Limited Function Check - Brakes

The brakes were not operationally checked.

Frame Condition

Rating:

Good

Left Front Tire

Triangle TB516 20.5R25 15/32" Tread Depth Cuts in the sidewall

Rating:

Good

Left Rear Tire

Triangle TB516 20.5R25 18/32" Tread Depth

Rating:

Good

Right Rear Tire

Triangle TB516 20.5R25 18/32" Tread Depth

Rating:

Good

Right Front Tire

Maxam MS301 20.5R25 27/32" Tread Depth

Rating:

Good

Wheel Condition

No visible damage or missing components

SPECIALTY

Front Attachment

Front Attachment Details, Quick Coupler Type: Hydraulic Coupler, 3.0 cyd 100 in Bucket Type: Bucket, Forks

WHEEL LOADER*

Loader Bucket Condition

Rating:

Good

Loader Bucket Cutting Edge

No visible damage or missing components

Rating:

Good

Loader Quick Coupler

Doosan Coupler, Not operationally checked

Rating:

Good

Forks

Rating:

Good

RECONDITIONING

Park Brake: Broken off of transmission, The brake caliper bosses are broken off.	\$3,000
Left Front Tire: Triangle TB516 20.5R25 15/32" Tread Depth Cuts in the sidewall	\$7,500
Seat/Armrests: Operator seat cover torn	\$450
Glass: Windshield cracked	\$1,500
Limited Function Check (Control Station): The item was not operational. The transmission is damaged per POC	\$8,000
Paint: Damage	\$2,500
Grille damaged,	\$2,000
Fenders: Right front damaged	\$1,500
Left cab steps bent, Right cab steps bent, Both rear steps are damaged.	\$1,800
The DEF Tank Housing is damaged.	\$3,500

Damaged Vent Louve In Dash	\$150
Total	\$31,900