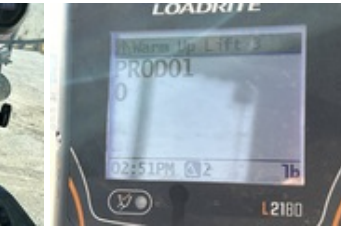
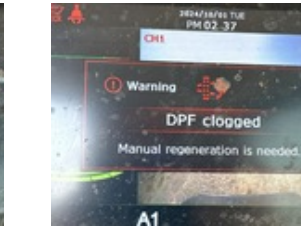
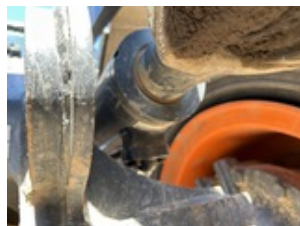
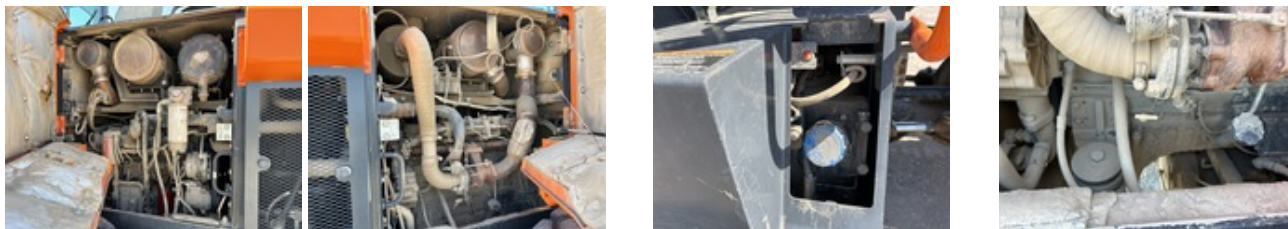


2022 DOOSAN DL220-7

UNIT: DHKCWLDVAM5050061









UNIT SPECS

Customer PNC Equipment Finance

LOCATION

CENTRAL POWER SYSTEMS & SERVICES

15525 E Admiral Pl
Tulsa, OK 74116

GENERAL APPEARANCE

Year
2022

Make
DOOSAN

Model
DL220-7

Unit Number
195790

Pre-Operational Checks

Confirm Fluids Checked: Engine Coolant. Confirm Fluids Checked: Engine(s) Oil. Confirm Fluids Checked: Transmission Fluid. Confirm Fluids Checked: Hydraulic Fluid. Confirm Fluids Checked: Fuel Level

Paint
Damage

Body Panels
Rear doors have stiff hinges but will open.

Fenders

Right front damaged, Right rear damaged

Steps

Right cab steps damaged

Hand Rails

No visible damage or missing components

Exterior Lights

1 Inoperable / damaged / missing Right front chassis light damaged.

Cab/Canopy Overhead Structural Framework

No visible damage

Serial Number / VIN

DHKCWLDVAM5050061

Serial Number

DHKCWLDVAM5050061

SAFETY**Travel Alarm**

Operational

Horn

Operational

Seat Belts

Operational

Safety Lock Out/Stop

Operational

Current Safety Manual

No

Current Operator/Maintenance Manual

Yes

CONTROL STATION**Seat/Armrests**

No visible damage or missing components

Glass

No visible damage or missing components

Cab Doors

Door interior panel is missing.

Steering Controls

Rating:

Good

Hydraulic Controls

Rating:

Good

Drivetrain Controls

Rating:

Good

Dash Console

Rating:

Good

Engine Oil Pressure

The fault indicator shuts off after the engine oil pressure rises.

Warning Lights

Operational, Check engine light stays on

Gauges

Operational

Rear View Camera

Camera operates as intended

Air Conditioner

Operational

Heater

Operational

Limited Function Check (Control Station)

The main components are in place and operational as noted.



Control Station

Cab Type, Enclosed Cab, Air Conditioner, Rear View Camera, Air Ride Seat, Autoshift, Loadrite On-Board Scale w/Printer

Hour Meter / Odometer

3307 hrs

Hour Meter /Odometer Usage Reading (Start)

3306.8 hrs

ENGINE

A/C Compressor

Operational

Blow-by (Subjective Visual Observation)

Minor



Starter

Operational

Exhaust System

No visible damage or missing components

Radiator

The condenser coils need to be cleaned.

Rating:

Good

Oil Leaks

Oil Filter

Fuel Leaks

No dripping leaks

Cooling System Leaks

No dripping leaks

Limited Function Check (Engine)

The engine started and ran.



Engine

2021 US EPA Label, Requires Diesel Exhaust Fluid

DRIVETRAIN

Transmission

Operational

Rating:

Good

Front Drive Axle

Rating:

Good

Rear Drive Axle

Rating:

Good

Final Drives

Rating:

Good

Limited Function Check (Drivetrain)

The drivetrain was operational.

HYDRAULICS

Pumps (Hydraulics)

Rating:

Good

Valves

Rating:

Good

Hydraulic Tank

Rating:

Good

Hoses (Hydraulics)

Rating:

Good

Loader Lift Cylinders

Rating:

Good

Bucket Tilt Cylinders

Rating:
Good

Auxiliary Hydraulic Plumbing
Capped off, Not operationally checked, Front

Steering Cylinders
Rating:
Good

Limited Function Check (Hydraulics)
The hydraulic system was operational.

CHASSIS

Lift Arm Condition
Rating:
Good

Chassis To Arm Pins
Rating:
Good

Tilt Linkage
Rating:
Good

Tilt Linkage Pins And Bushings
Rating:
Good

Quick Coupler To Arms Pins
Rating:
Good

Limited Function Check (Chassis)
The main chassis components were operational in a limited check.

Articulating Center Pins
Rating:
Good

Brake Type
Hydraulic

Master Cylinder
Rating:
Good

Brake Lines/Hoses
Rating:
Good

Park Brake
Stopped from a slow roll
Rating:
Good

Limited Function Check - Brakes
The brake system functioned, stopping and holding the machine.

Frame Condition

Rating:

Good

Left Front Tire

Triangle TB516 20.5R25 25/32" Tread Depth

Rating:

Good

Left Rear Tire

Triangle TB516 20.5R25 26/32" Tread Depth

Right Rear Tire

Triangle TB516 20.5R25 26/32" Tread Depth

Right Front Tire

Triangle TB516 20.5R25 25/32" Tread Depth

Rating:

Good

Wheel Condition

No visible damage or missing components

SPECIALTY

Front Attachment

Front Attachment Details, Quick Coupler Type: Hydraulic Coupler, 3 cyd 105.5 in Bucket Type: Bucket, Forks

WHEEL LOADER*

Loader Bucket Condition

Rating:

Good

Loader Bucket Cutting Edge

No visible damage or missing components

Rating:

Good

Loader Quick Coupler

Doosan Coupler, Not operational

Rating:

Good

Forks

Rating:

Good

RECONDITIONING

| | |
|---|-----------------|
| Cab Doors: Door interior panel is missing. | \$350 |
| Warning Lights: Operational, Check engine light stays on | \$3,500 |
| Paint: Damage | \$2,500 |
| Fenders: Right front damaged, Right rear damaged | \$3,500 |
| Right cab steps damaged | \$600 |
| Exterior Lights: 1 Inoperable / damaged / missing Right front chassis light damaged. | \$300 |
| Loader Quick Coupler: Doosan Coupler, Not operational | \$1,000 |
| Total | \$11,750 |