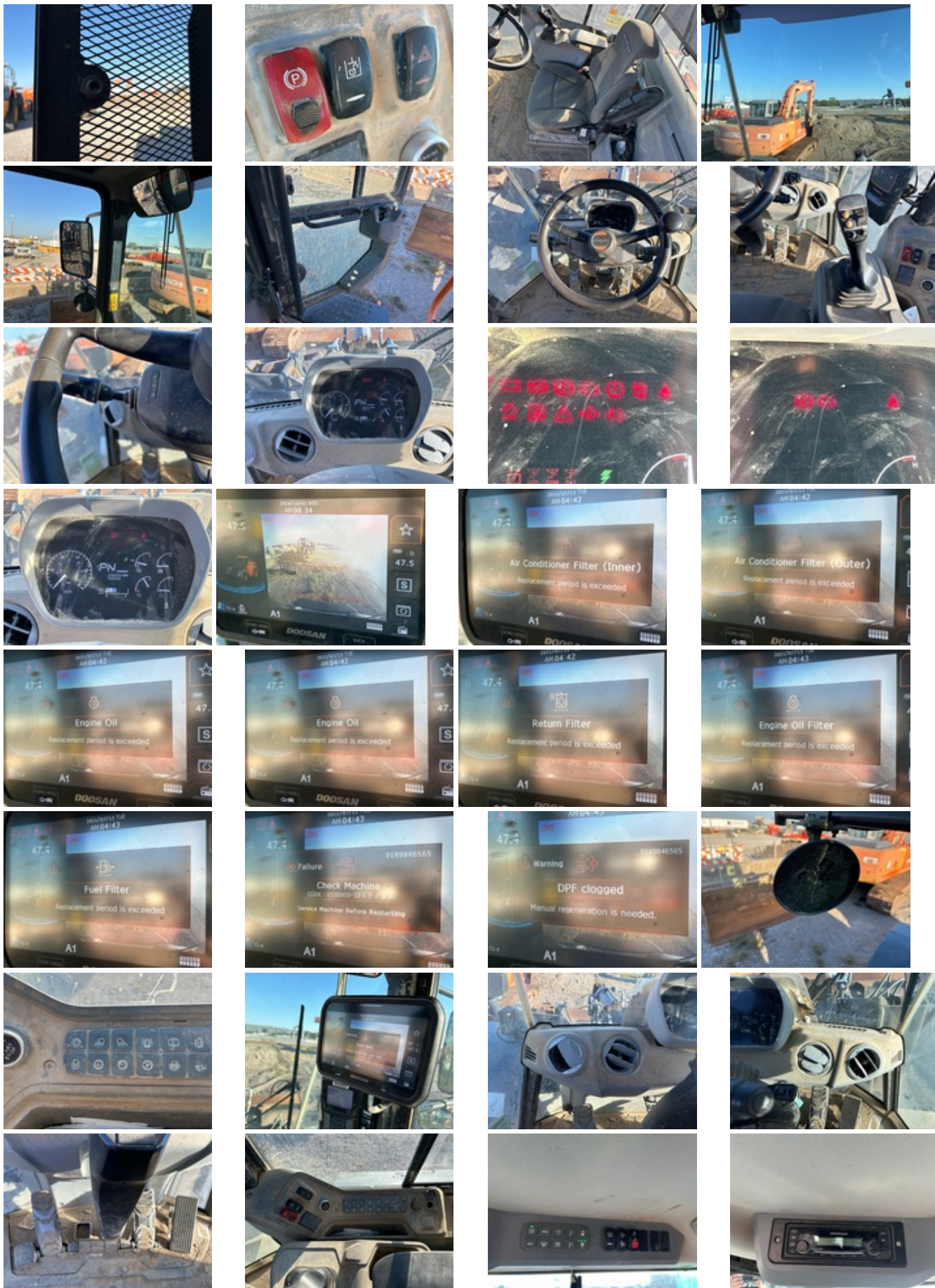


# 2022 DOOSAN DL220-7

UNIT: DHKCWLDVCM5050052



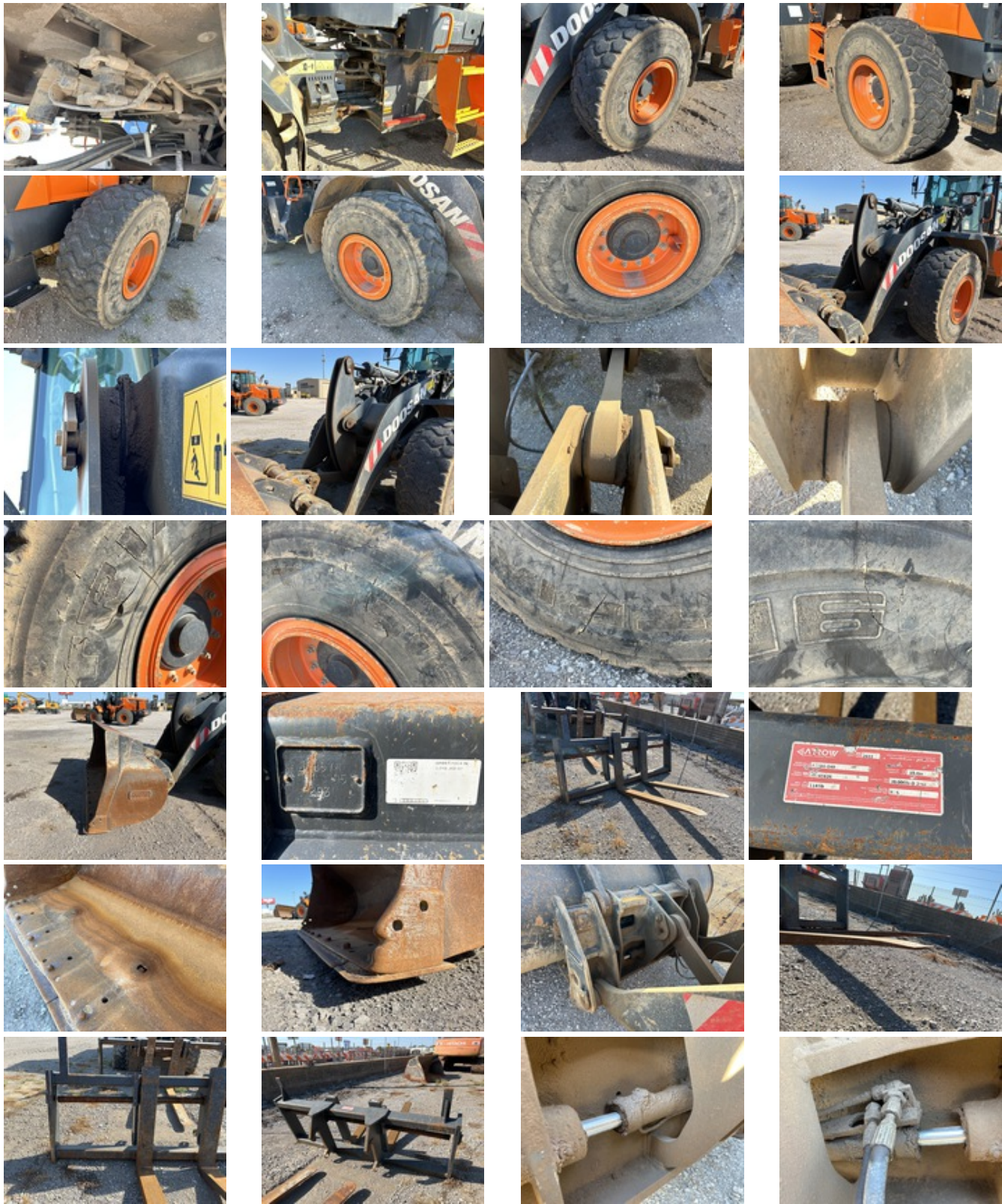














## UNIT SPECS

**Customer** PNC Equipment Finance

## LOCATION

### CENTRAL POWER SYSTEMS & SERVICES

15525 E Admiral Pl  
Tulsa, OK 74166

## GENERAL APPEARANCE

Year  
2022

Make  
DOOSAN

Model  
DL220-7

Unit Number  
195790

### Pre-Operational Checks

Confirm Fluids Checked: Engine Coolant. Confirm Fluids Checked: Engine(s) Oil. Confirm Fluids Checked: Transmission Fluid. Confirm Fluids Checked: Hydraulic Fluid. Confirm Fluids Checked: Fuel Level

Paint  
Damage

Body Panels  
Left rear door damaged, Right rear door damaged, The rear door latches are damaged.

Fenders  
Right front damaged

Steps  
Left cab steps damaged, Right cab steps bent, Both rear steps are damaged. The DEF Tank Housing is damaged

Hand Rails

No visible damage or missing components

Exterior Lights

All lights operational

Cab/Canopy Overhead Structural Framework

No visible damage

Serial Number / VIN

DHKCWLDCM5050052

Serial Number

DHKCWLDCM5050052

## SAFETY

Travel Alarm

Operational

Horn

Operational

Seat Belts

Operational

Safety Lock Out/Stop

Operational

Current Safety Manual

No

Current Operator/Maintenance Manual

No

## CONTROL STATION

Seat/Armrests

No visible damage or missing components

Glass

No visible damage or missing components

Mirrors

Left side convex mirror glass is missing.

Cab Doors

No visible damage or missing components

Steering Controls

Rating:

Good

Hydraulic Controls

Rating:

Good

Drivetrain Controls

Rating:

Good

Dash Console

Rating:

Good

Engine Oil Pressure

The fault indicator shuts off after the engine oil pressure rises.

Warning Lights

Operational, Check engine light stays on DPF clogged.

Gauges

Operational

Rear View Camera

Camera operates as intended

Air Conditioner

Operational

Heater

Operational

Limited Function Check (Control Station)

The main components are in place and operational as noted. One of the bent louvres is damaged.



Control Station

Rear View Camera, Air Ride Seat, Autoshift, Loadrite On-Board Scale w/Printer

Hour Meter / Odometer

4203 hrs

Hour Meter /Odometer Usage Reading (Start)

4203.0 hrs

## ENGINE

A/C Compressor

Operational

Blow-by (Subjective Visual Observation)

Minor



Starter

Operational

Exhaust System

No visible damage or missing components

Radiator

Rating:

Good

Oil Leaks

No dripping leaks

Fuel Leaks

No dripping leaks

Cooling System Leaks



No dripping leaks

Limited Function Check (Engine)

The engine started and ran.



Engine

2021 US EPA Label, Requires Diesel Exhaust Fluid

## DRIVETRAIN

Transmission

Operational

Rating:

Good

Front Drive Axle

Rating:

Good

Rear Drive Axle

Rating:

Good

Final Drives

Rating:

Good

Limited Function Check (Drivetrain)

The drivetrain was operational.

## HYDRAULICS

Pumps (Hydraulics)

Rating:

Good

Valves

Rating:

Good

Hydraulic Tank

Rating:

Good

Hoses (Hydraulics)

Rating:

Good

Loader Lift Cylinders

Rating:

Good

Bucket Tilt Cylinders

Rating:

Good

Auxiliary Hydraulic Plumbing

Capped off, Not operationally checked



Steering Cylinders

Rating:

Good

Limited Function Check (Hydraulics)

The hydraulic system was operational.

## CHASSIS

Lift Arm Condition

Rating:

Good

Chassis To Arm Pins

Rating:

Good

Tilt Linkage

Rating:

Good

Tilt Linkage Pins And Bushings

Rating:

Good

Quick Coupler To Arms Pins

Rating:

Good

Limited Function Check (Chassis)

The main chassis components were operational in a limited check.

Articulating Center Pins

Rating:

Good

Brake Type

Hydraulic

Master Cylinder

Rating:

Good

Brake Lines/Hoses

Rating:

Good

Park Brake

Stopped from a slow roll

Rating:

Good

Limited Function Check - Brakes

The brake system functioned, stopping and holding the machine.

Frame Condition

Rating:

Good

Left Front Tire

Triangle TB516 20.5R25 16/32" Tread Depth There is a cut on the sidewall.

Rating:

Good

Left Rear Tire

Triangle TB516 20.5R25 16/32" Tread Depth

Rating:

Good

Right Rear Tire

Triangle TB516 20.5R25 16/32" Tread Depth There are cuts in the sidewall.

Rating:

Good

Right Front Tire

Triangle TB516 20.5R25 16/32" Tread Depth There are cuts in the sidewall.

Rating:

Good

Wheel Condition

No visible damage or missing components

### SPECIALTY

Front Attachment

Front Attachment Details, Quick Coupler Type: Hydraulic Coupler, 3 cyd 100.5 in Bucket Type: Grapple Bucket, Forks

### WHEEL LOADER\*

Loader Bucket Condition

The bucket has damage to the bottom with dents and holes.

Rating:

Fair

Loader Bucket Cutting Edge

No visible damage or missing components

Rating:

Good

Loader Quick Coupler

Doosan Coupler, Not operational, The coupler did not respond to the controls. The hose bracket on the lift arm is bent.

Rating:

Poor

Forks

Bent forks. Bent carrier bar

Rating:

Fair



## RECONDITIONING

<b>Right Rear Tire: Triangle TB516 20.5R25 16/32" Tread Depth There are cuts in the sidewall.</b>	<b>\$7,500</b>
<b>Right Front Tire: Triangle TB516 20.5R25 16/32" Tread Depth There are cuts in the sidewall.</b>	<b>\$7,500</b>
<b>Mirrors: Left side convex mirror glass is missing.</b>	<b>\$250</b>
<b>Warning Lights: Operational, Check engine light stays on DPF clogged.</b>	<b>\$3,500</b>
<b>One of the vent louvres is damaged.</b>	<b>\$150</b>
<b>Paint: Damage</b>	<b>\$2,500</b>
<b>Body Panels: Left rear door damaged, Right rear door damaged, The rear door latches are damaged.</b>	<b>\$5,000</b>
<b>Fenders: Right front damaged</b>	<b>\$1,500</b>
<b>Left cab steps damaged, Right cab steps bent, Both rear steps are damaged.</b>	<b>\$1,800</b>
<b>Loader Bucket Condition: The bucket has damage to the bottom with dents and holes.</b>	<b>\$1,000</b>
<b>Loader Quick Coupler: Not operational</b>	<b>\$750</b>
<b>Bent forks. Bent carrier bar</b>	<b>\$4,500</b>

The hose bracket on the lift arm is bent.

\$350

**Total**

**\$36,300**