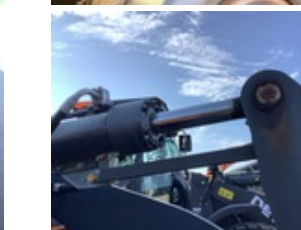
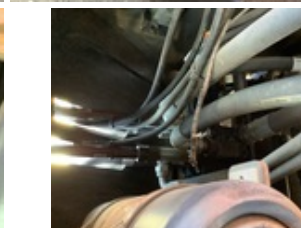
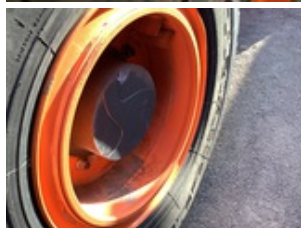
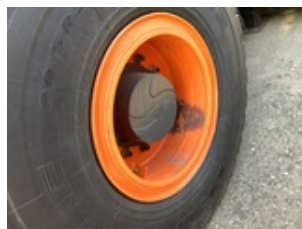
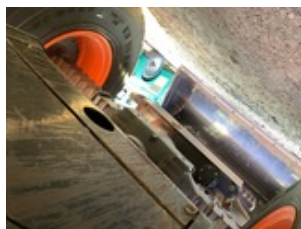
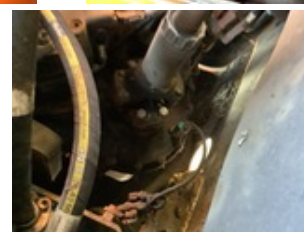
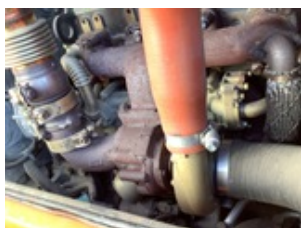
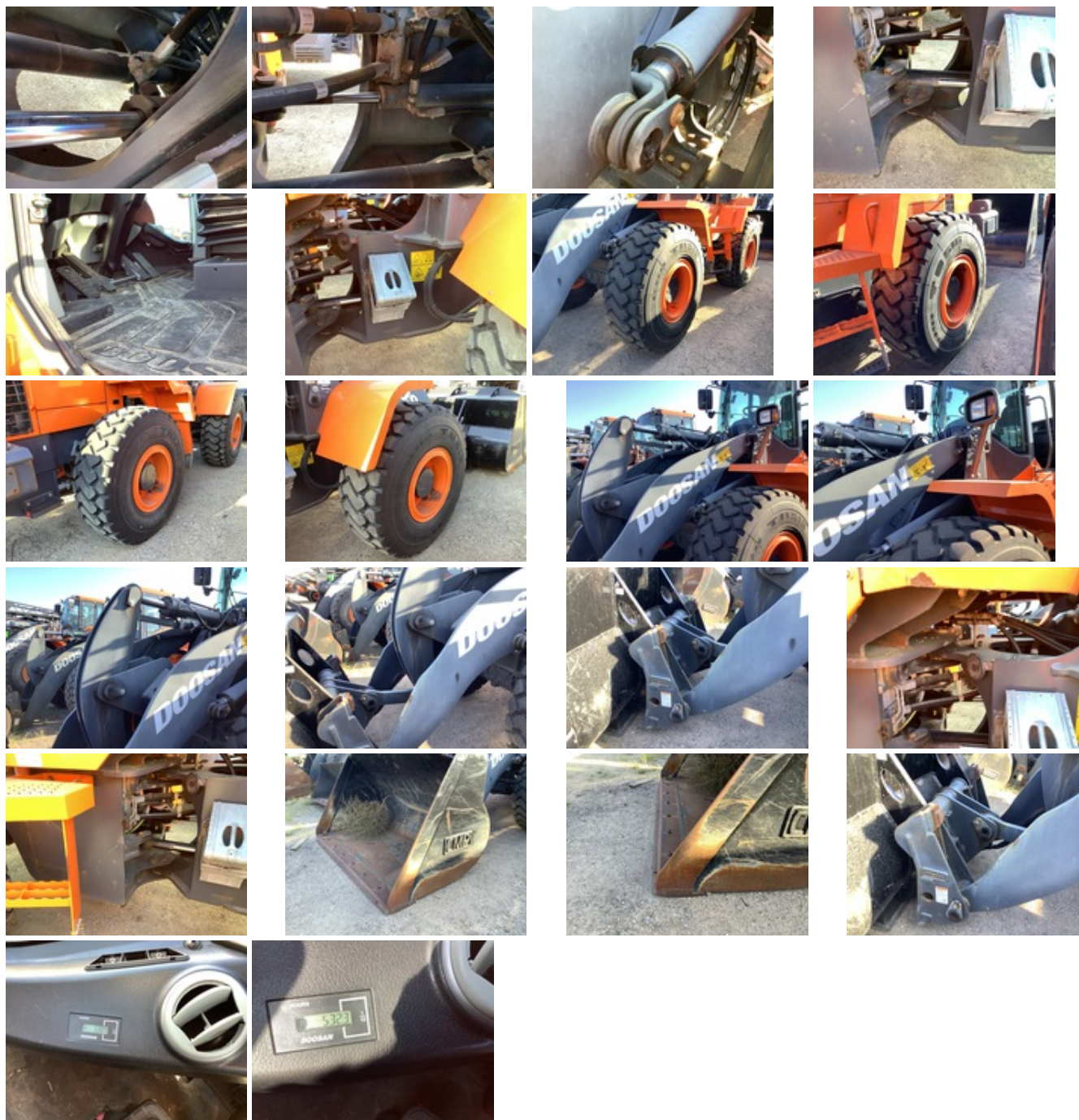


2019 DOOSAN DL200-5

UNIT: DWGCWLBPRJ1010263







UNIT SPECS

Customer

PNC Equipment Finance

LOCATION

RTL EQUIPMENT
14833 164th Ave SE
Big Lake, MN 55309

GENERAL APPEARANCE

Year
2019

Make
DOOSAN

Model
DL200-5

Unit Number
168012

Pre-Operational Checks

Confirm Fluids Checked: Engine Coolant. Confirm Fluids Checked: Engine(s) Oil. Confirm Fluids Checked: Transmission Fluid. Confirm Fluids Checked: Hydraulic Fluid. Confirm Fluids Checked: Fuel Level

Paint
Damage

Body Panels
No visible damage or missing components.

Fenders
No visible damage or missing components.

Steps
No visible damage or missing components.

Hand Rails
No visible damage or missing components

Exterior Lights
Could not get cab lights to turn on

Cab/Canopy Overhead Structural Framework
No visible damage

Serial Number / VIN
DWGCWLRPJ1010263

Serial Number
DWGCWLRPJ1010263

SAFETY

Travel Alarm
Operational

Horn
Operational

Seat Belts
Operational

Current Safety Manual
Yes

Current Operator/Maintenance Manual
Yes

CONTROL STATION

Seat/Armrests

No visible damage or missing components

Glass

No visible damage or missing components

Cab Doors

No visible damage or missing components

Steering Controls

Rating:

Good

Hydraulic Controls

Rating:

Good

Drivetrain Controls

Rating:

Good

Dash Console

Rating:

Good

Engine Oil Pressure

No oil pressure indicator

Warning Lights

Operational

Gauges

Operational

Rear View Camera

Camera operates as intended

Air Conditioner

Operational

Heater

Operational

Limited Function Check (Control Station)

The main components are in place and operational as noted.



Control Station

Cab Type, Enclosed Cab, Air Conditioner, Ride Control, Autoshift

Hour Meter / Odometer

532 mi

Hour Meter /Odometer Usage Reading (Start)

532.3 hrs

ENGINE

A/C Compressor

Operational

Blow-by (Subjective Visual Observation)
No noticeable vapor or pressure



Starter
Operational

Exhaust System
No visible damage or missing components

Radiator
Rating:
Good

Oil Leaks
No dripping leaks

Limited Function Check (Engine)
The engine started and ran.



Engine
Requires Diesel Exhaust Fluid

Engine Coolant Heater
Engine Coolant Heater

DRIVETRAIN

Transmission
Operational
Rating:
Good

Front Drive Axle
Rating:
Good

Rear Drive Axle
Rating:
Good

Final Drives
Rating:
Good

Limited Function Check (Drivetrain)
The drivetrain was operational.

HYDRAULICS

Pumps (Hydraulics)
Rating:
Good

Valves
Rating:
Good

Hydraulic Tank

Rating:

Good

Hoses (Hydraulics)

Rating:

Good

Loader Lift Cylinders

Rating:

Good

Bucket Tilt Cylinders

Rating:

Good

Steering Cylinders

Rating:

Good

Limited Function Check (Hydraulics)

The hydraulic system was operational.

CHASSIS

Lift Arm Condition

Rating:

Good

Chassis To Arm Pins

Rating:

Good

Tilt Linkage

Rating:

Good

Tilt Linkage Pins And Bushings

Rating:

Good

Quick Coupler To Arms Pins

Rating:

Good

Limited Function Check (Chassis)

The main chassis components were operational in a limited check.

Articulating Center Pins

Rating:

Good

Brake Type

Hydraulic

Master Cylinder

Rating:

Good

Brake Lines/Hoses

Not operationally checked

Park Brake

Stopped from a slow roll

Rating:

Good

Limited Function Check - Brakes

The brake system functioned, stopping and holding the machine.

Frame Condition

Rating:

Good

Left Front Tire

Triangle TB516 20.5R25 37/32" Tread Depth

Rating:

Good

Left Rear Tire

Triangle TB516 20.5R25 38/32" Tread Depth

Rating:

Good

Right Rear Tire

Triangle TB516 20.5R25 38/32" Tread Depth

Rating:

Good

Right Front Tire

Triangle TB516 20.5R25 39/32" Tread Depth

Rating:

Good

Wheel Condition

No visible damage or missing components

SPECIALTY

Front Attachment

Front Attachment Details, Quick Coupler Type: Hydraulic Coupler, 100 in

WHEEL LOADER*

Loader Bucket Condition

Rating:

Good

Loader Bucket Cutting Edge

No visible damage or missing components

Rating:

Good

Loader Quick Coupler

Doosan Coupler, Not operationally checked

LOGISTICS INFORMATION

General Shipping Information

Yes: Does this Unit Run? Yes: If self propelled, does the unit travel? Yes: Is the unit taller than 12'? Yes: Inflated Tires - item can roll? No: Is the unit wider than 8'6"? No: Noticeable fluid leaks?

Road Related Shipping Info

Yes: Lights Operate? Yes: Brakes Operate? Yes: Tires OK?

RECONDITIONING

Paint: Damage	\$2,500
Total	\$2,500