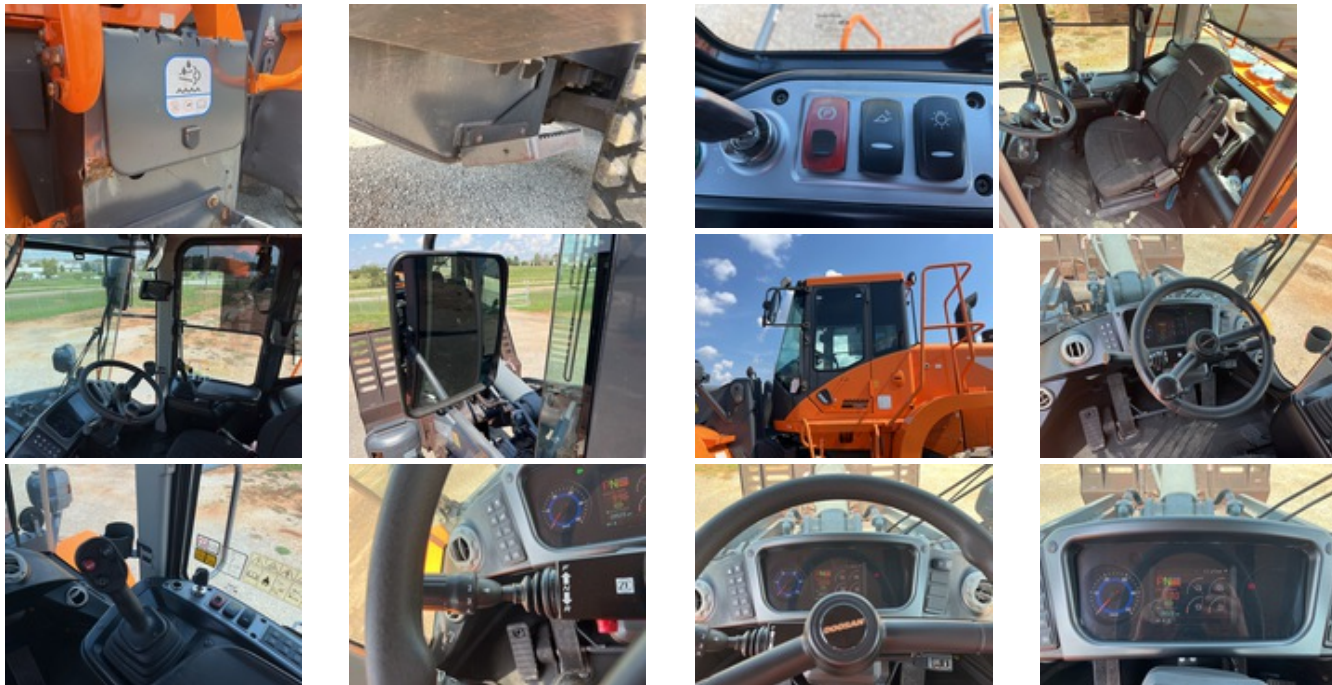
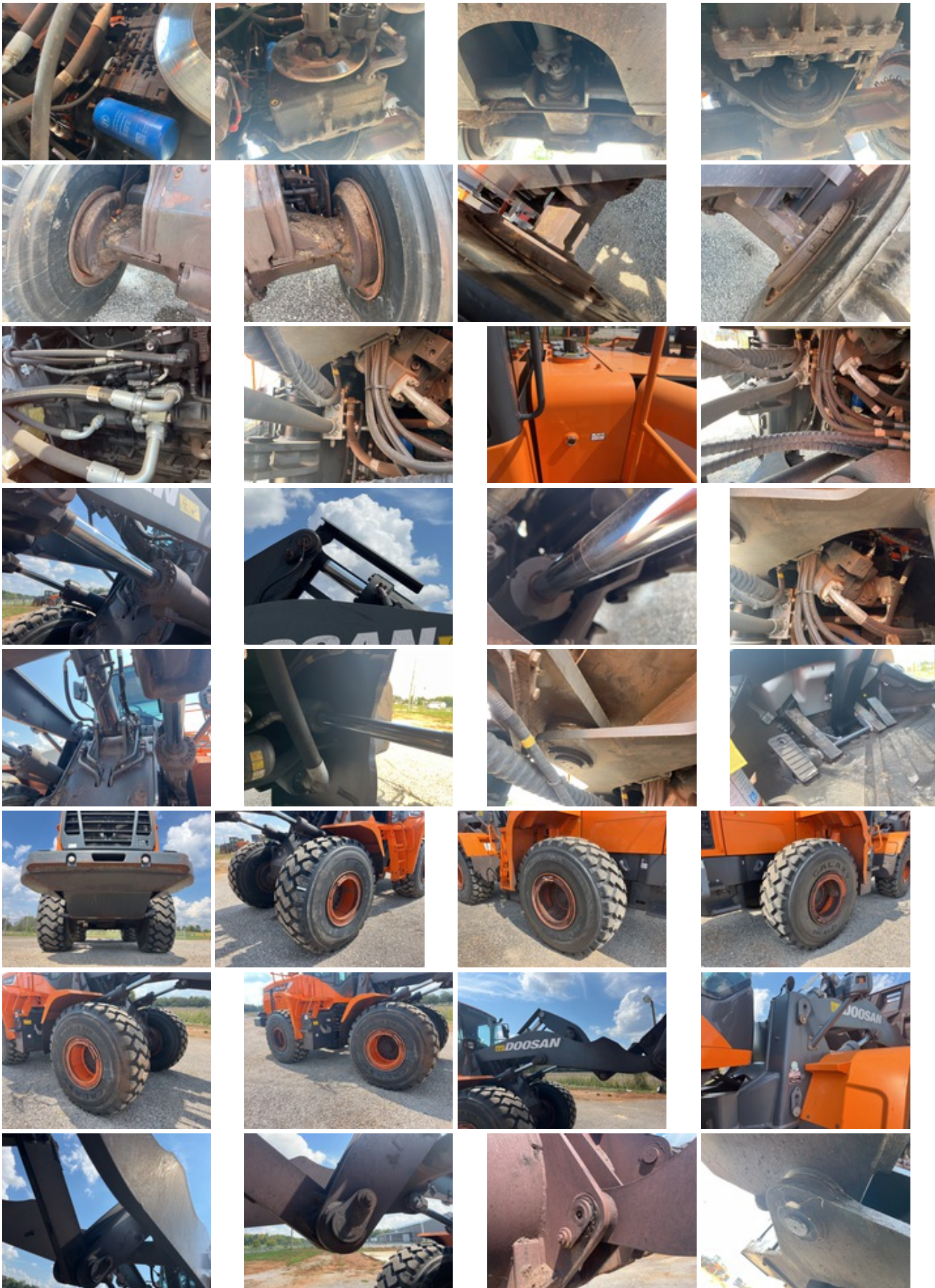


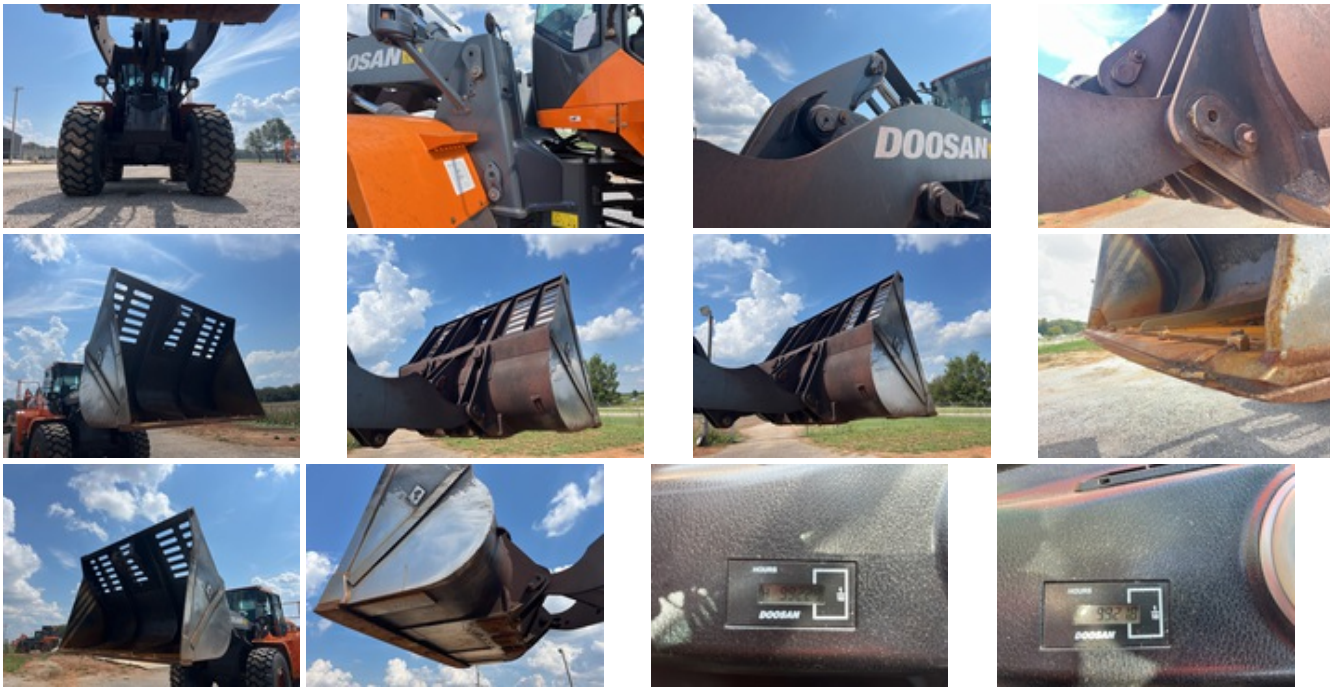
2019 DOOSAN DL300-5

UNIT: DWGCWLDGK1020316









UNIT SPECS

Customer PNC Equipment Finance

LOCATION

R&M EQUIPMENT RENTALS, LLC
25480 Alabama Highway 20
Mooreville, AL 35649

GENERAL APPEARANCE

Year
2019

Make
DOOSAN

Model
DL300-5

Unit Number
176192

Pre-Operational Checks
Confirm Fluids Checked: Engine Coolant. Confirm Fluids Checked: Engine(s) Oil. Confirm Fluids Checked: Transmission Fluid. Confirm Fluids Checked: Hydraulic Fluid. Confirm Fluids Checked: Fuel Level

Paint
Damage

Body Panels
DEF tank cover

Fenders

Left rear damaged, Right rear damaged

Steps

Left cab steps damaged, Right cab steps missing

Hand Rails

Left front hand rails damaged

Exterior Lights

6 Inoperable / damaged / missing

Cab/Canopy Overhead Structural Framework

No visible damage

Serial Number / VIN

DWGCWLDGEK1020316

Serial Number

DWGCWLDGEK1020316

SAFETY**Travel Alarm**

Operational

Horn

Operational

Seat Belts

Operational

Safety Lock Out/Stop

Operational

Current Safety Manual

No

Current Operator/Maintenance Manual

No

CONTROL STATION**Seat/Armrests**

No visible damage or missing components

Glass

No visible damage or missing components

Cab Doors

No visible damage or missing components

Steering Controls

Rating:

Good

Hydraulic Controls

Rating:

Good

Drivetrain Controls

Rating:

Good

Dash Console

Rating:

Good

Engine Oil Pressure

No oil pressure indicator

Warning Lights

Operational

Gauges

Operational

Rear View Camera

Camera operates as intended

Air Conditioner

Operational

Heater

Not operationally checked

Limited Function Check (Control Station)

The main components are in place and operational as noted.



Control Station

Cab Type, Enclosed Cab, Air Conditioner, Rear View Camera, Air Ride Seat

Hour Meter / Odometer

9922 mi

Hour Meter /Odometer Usage Reading (Start)

9921.8 hrs

ENGINE

A/C Compressor

Operational

Blow-by (Subjective Visual Observation)

No noticeable vapor or pressure



Starter

Operational

Exhaust System

No visible damage or missing components

Radiator

Rating:

Good

Oil Leaks

No dripping leaks

Fuel Leaks
No dripping leaks

Cooling System Leaks
No dripping leaks

Limited Function Check (Engine)
The engine started and ran.

Engine
2019 US EPA Label, Requires Diesel Exhaust Fluid

DRIVETRAIN

Transmission
Operational

Transfer Case / Drop Box
Not operationally checked

Front Drive Axle
Rating:
Good

Rear Drive Axle
Rating:
Good

Final Drives
Rating:
Good

Limited Function Check (Drivetrain)
The drivetrain was operational.

HYDRAULICS

Pumps (Hydraulics)
Rating:
Good

Valves
Rating:
Good

Hydraulic Tank
Rating:
Good

Hoses (Hydraulics)
Rating:
Good

Loader Lift Cylinders
Rating:
Good

Bucket Tilt Cylinders
Rating:

Good

Steering Cylinders

Rating:

Good

Limited Function Check (Hydraulics)

The hydraulic system was operational.

CHASSIS

Lift Arm Condition

Rating:

Good

Chassis To Arm Pins

Rating:

Good

Tilt Linkage

Rating:

Good

Tilt Linkage Pins And Bushings

Rating:

Good

Bucket To Arm Pins

Rating:

Good

Limited Function Check (Chassis)

The main chassis components were operational in a limited check.

Articulating Center Pins

Rating:

Good

Brake Type

Hydraulic

Master Cylinder

Rating:

Good

Brake Lines/Hoses

Rating:

Good

Park Brake

Rating:

Good

Limited Function Check - Brakes

The brake system functioned, stopping and holding the machine.

Frame Condition

Rating:

Good

Left Front Tire
Galaxy LDSR 300 23.5R25 45/32" Tread Depth

Left Rear Tire
Galaxy LDSR 300 23.5R25 45/32" Tread Depth

Right Rear Tire
Galaxy LDSR 300 23.5R25 45/32" Tread Depth

Right Front Tire
Galaxy LDSR 300 23.5R25 45/32" Tread Depth

Wheel Condition
No visible damage or missing components

SPECIALTY

Front Attachment
Front Attachment Details, 120 in

WHEEL LOADER*

Loader Bucket Condition
Rating:
Good

Loader Bucket Cutting Edge
Edge damaged

RECONDITIONING

Paint: Damage \$2,500

Fenders: Left rear damaged, Right rear damaged \$4,000

Left cab steps damaged, Right cab steps missing \$1,500

Left front hand rails damaged	\$400
Exterior Lights: 6 Inoperable / damaged / missing	\$1,800
Loader Bucket Cutting Edge: Edge damaged	\$650
Total	\$10,850