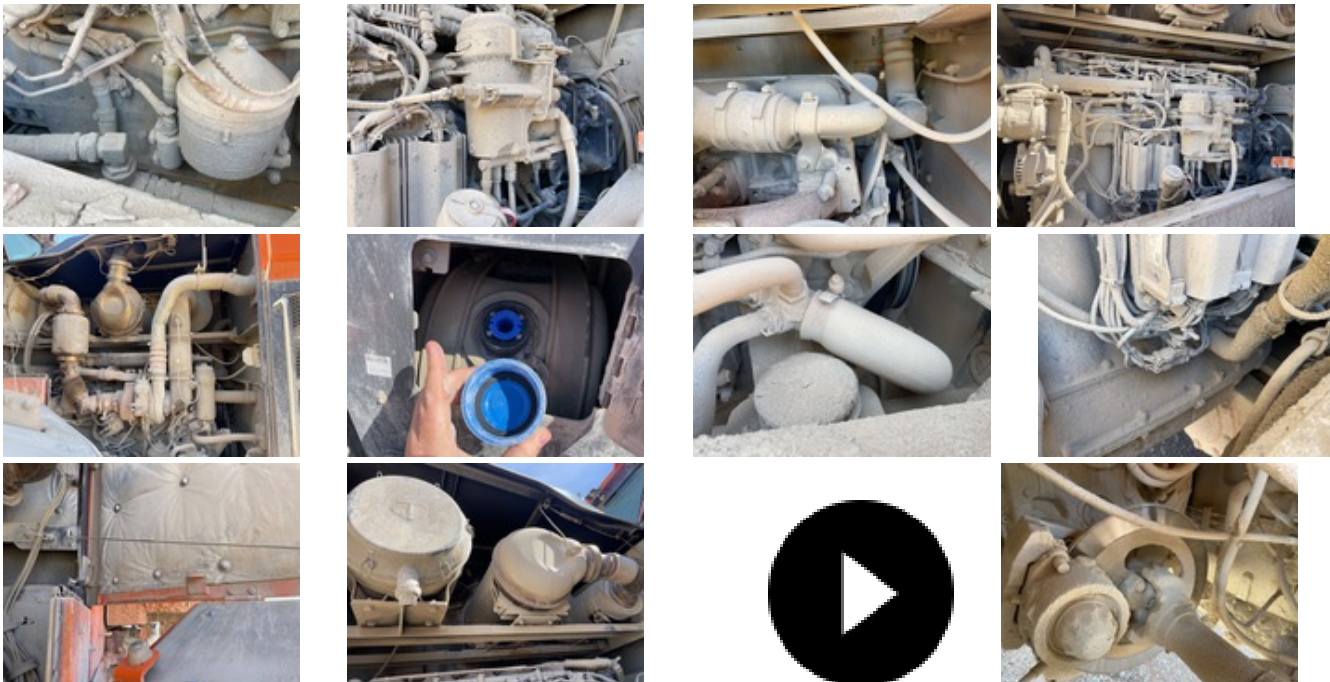
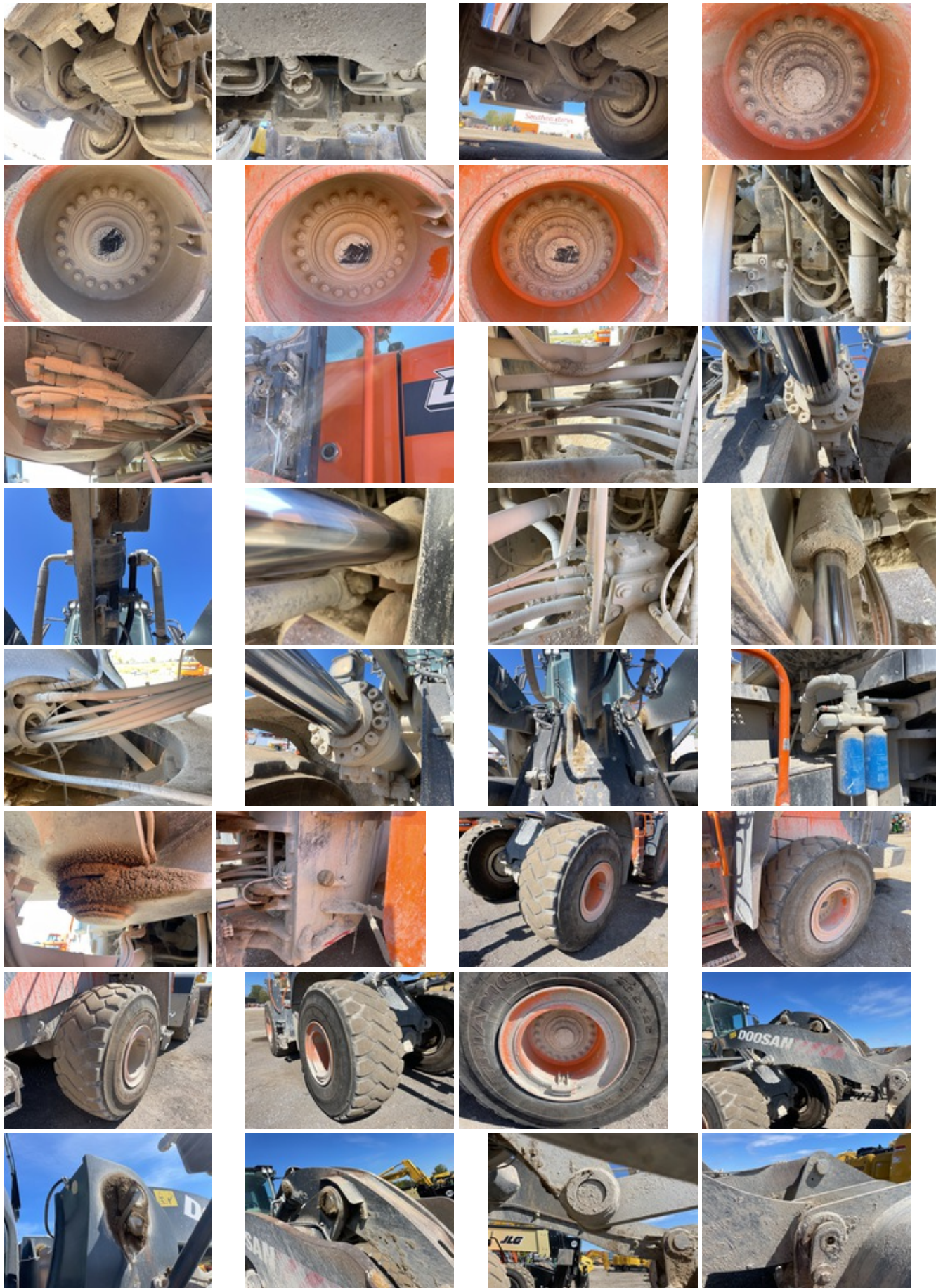


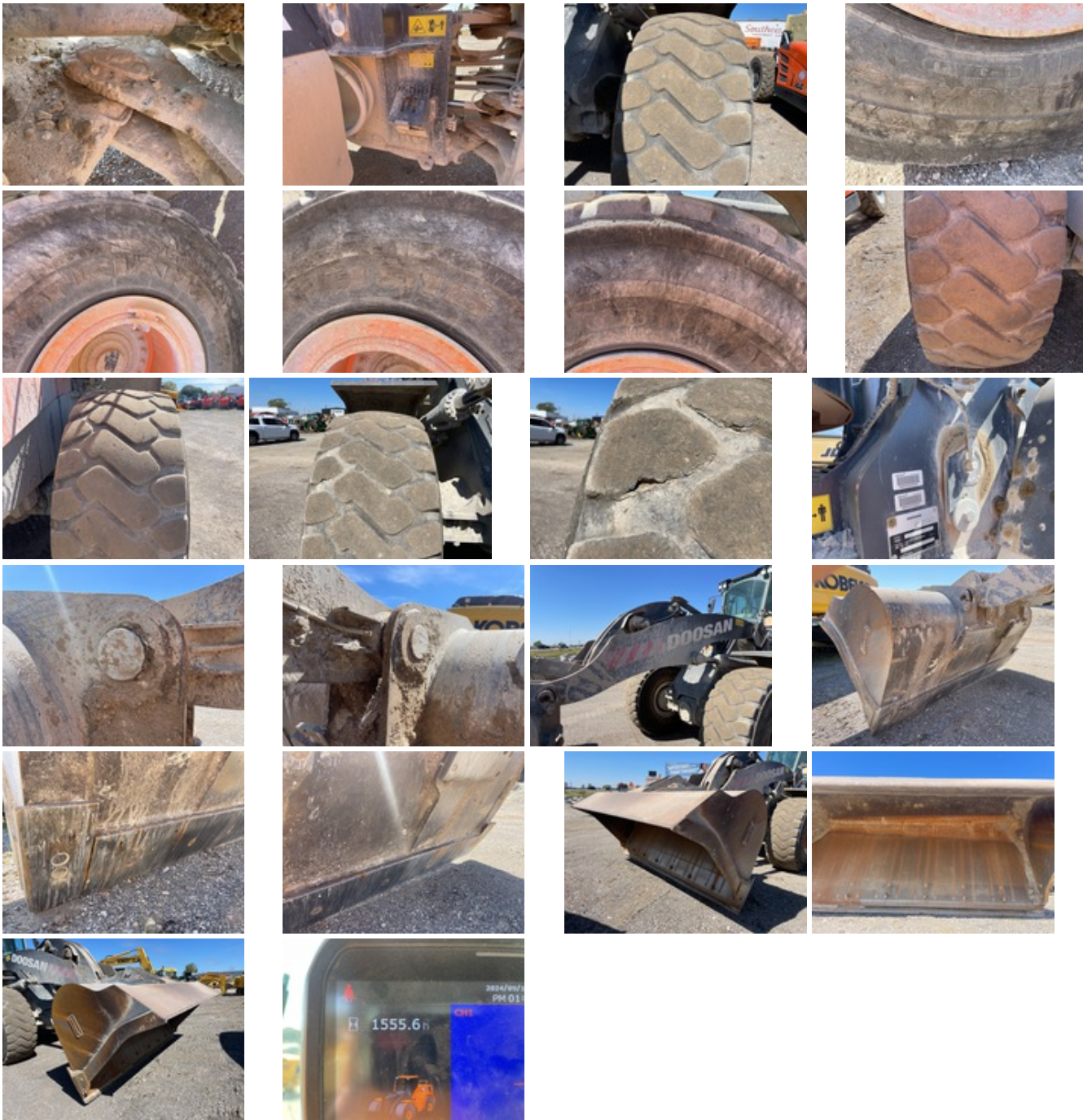
2022 DOOSAN DL420-7

UNIT: DWGCWLECCN1010175









UNIT SPECS

Customer

PNC Equipment Finance

LOCATION

SOUTHEASTERN EQUIPMENT COMPANY

4951 West 96th St.
Indianapolis, IN 46268

GENERAL APPEARANCE

Year
2022

Make
DOOSAN

Model
DL420-7

Unit Number
196034

Pre-Operational Checks

Confirm Fluids Checked: Engine Coolant. Confirm Fluids Checked: Engine(s) Oil. Confirm Fluids Checked: Transmission Fluid. Confirm Fluids Checked: Hydraulic Fluid. Confirm Fluids Checked: Fuel Level

Paint
Damage

Body Panels
Grille damaged, Right side engine door missing strut, Radiator door damaged

Fenders
Left rear damaged

Steps
Left cab steps damaged

Hand Rails
No visible damage or missing components

Exterior Lights
All lights operational

Cab/Canopy Overhead Structural Framework
No visible damage

Serial Number / VIN
DWGCWLECCN1010175

Serial Number
DWGCWLECCN1010175

SAFETY

Travel Alarm
Operational

Horn
Operational

Seat Belts
Operational

Current Safety Manual
No

Current Operator/Maintenance Manual
No

CONTROL STATION

Seat/Armrests

No visible damage or missing components

Glass

No visible damage or missing components

Cab Doors

Latch cover missing

Steering Controls

Rating:

Good

Hydraulic Controls

Rating:

Good

Drivetrain Controls

Rating:

Good

Dash Console

Rating:

Good

Engine Oil Pressure

No oil pressure indicator

Warning Lights

Operational

Gauges

Operational

Rear View Camera

Camera inoperable

Air Conditioner

Operational

Heater

Operational

Limited Function Check (Control Station)

The main components are in place and operational as noted.



Control Station

Cab Type, Enclosed Cab, Autoshift, Loadrite On-Board Scale

Hour Meter / Odometer

1555 mi

Hour Meter /Odometer Usage Reading (Start)

1555 mi

ENGINE

A/C Compressor

Operational

Starter
Operational

Exhaust System
No visible damage or missing components

Radiator
Rating:
Good

Oil Leaks
No dripping leaks

Fuel Leaks
No dripping leaks

Cooling System Leaks
No dripping leaks

Limited Function Check (Engine)
The engine started and ran.



Engine
No US EPA Label Present

DRIVETRAIN

Transmission
Operational
Rating:
Good

Transfer Case / Drop Box
Operational
Rating:
Good

Front Drive Axle
Rating:
Good

Rear Drive Axle
Rating:
Good

Final Drives
Rating:
Good

Limited Function Check (Drivetrain)
The drivetrain was operational.

HYDRAULICS

Pumps (Hydraulics)
Rating:
Good

Valves
Rating:
Good

Hydraulic Tank
Rating:
Good

Hoses (Hydraulics)
Rating:
Good

Loader Lift Cylinders
Rating:
Good

Bucket Tilt Cylinders
Rating:
Good

Steering Cylinders
Rating:
Good

Limited Function Check (Hydraulics)
The hydraulic system was operational.

CHASSIS

Lift Arm Condition
Rating:
Good

Chassis To Arm Pins
Rating:
Good

Tilt Linkage
Rating:
Good

Tilt Linkage Pins And Bushings
Rating:
Good

Bucket To Arm Pins
Rating:
Good

Limited Function Check (Chassis)
The main chassis components were operational in a limited check.

Body Options
Auto Lube

Articulating Center Pins
Rating:
Good

Brake Type
Hydraulic

Brake Lines/Hoses
Rating:
Good

Park Brake
Stopped from a slow roll
Rating:
Good

Limited Function Check - Brakes
The brake system functioned, stopping and holding the machine.

Frame Condition
Rating:
Good

Left Front Tire
Triangle TB516 26.5R25 20/32" Tread Depth
Rating:
Good

Left Rear Tire
Triangle TB516 26.5R25 23/32" Tread Depth
Rating:
Good

Right Rear Tire
Triangle TB516 26.5R25 22/32" Tread Depth
Rating:
Good

Right Front Tire
Triangle TB516 26.5R25 23/32" Tread Depth
Rating:
Good

Wheel Condition
No visible damage or missing components

SPECIALTY

Front Attachment
Front Attachment Details, 5.5 cyd 125 in Bucket Type: Bucket, Auto lube

WHEEL LOADER*

Loader Bucket Condition
Rating:
Good

Loader Bucket Cutting Edge
No visible damage or missing components
Rating:
Good

LOGISTICS INFORMATION

General Shipping Information

Yes: Does this Unit Run? Yes: If self propelled, does the unit travel? Yes: Inflated Tires - item can roll? No: Noticeable fluid leaks?

RECONDITIONING

| | |
|-------------------------------------------------------------------------------------------------|----------------|
| Cab Doors: Latch cover missing | \$400 |
| Rear View Camera: Camera inoperable | \$1,000 |
| Paint: Damage | \$2,500 |
| Body Panels: Grille damaged, Right side engine door missing strut, Radiator door damaged | |
| Fenders: Left rear damaged | \$2,000 |
| Left cab steps damaged | \$600 |
| Total | \$6,500 |